

FM18 rewrites the requirements of being a powerful indicator. It contains nearly all the features and functions that static and simple dynamic industrial weighing applications need. Equipped with a 24-bit Low-Noise Δ - Σ Analog-to-Digital Converter, special linearity compensation method plus all other state-of-the-art technologies applied. These enable **FM18** to provide fast, stable, and almost error-free weighing results anytime when needed. True 6-wire load cell compensation system, easy drive up to 8 x 350 Ω , runs at 1.6 million internal counts plus all the built-in functions, these are the foundation that makes **FM18** good for nearly all static and mid to low-speed dynamic weighing applications.

FUNCTIONS:

- Weighing
- Check weighing Function
- Piece Count Mode with Check Function
- Percentage Mode with Check Function
- Animal Weighing
- User Programmable Check Functions Buzzer Output
- Memory Accumulation
- Pre-set Tare
- Independent and User Programmable Print Format for Weighing, Piece Count, Percentage Mode
- Independent and User Programmable Data Format for Check weighing, Piece Checking, Percentage Checking
- Built-in Inflow and Outflow Control Logic
- Built-in Near Zero Logic for Dynamic Weighing Applications
- Support Ticket and Label Printing
- Support Q&A with other Peripherals
- Support Direct Control by External Peripheral

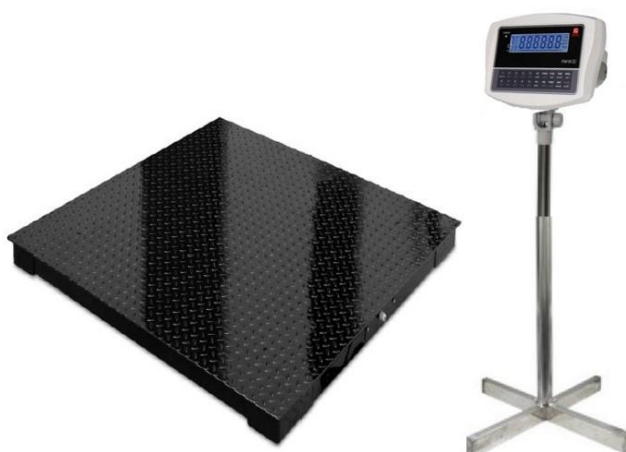
KEY FEATURES:

- 24 bit Low-Noise Delta to Sigma to Delta (Δ - Σ) Analog-to-Digital Converter
- Support Single or Dual Weighing Range Mode
- Free Capacity and Division Setting
- kg & lb Conversion (Single Weighing Range Mode only)
- True 6-wire (with Remote Sense) Load Cell Compensation System
- Power up to 8 x 350 Ω Load Cells or 16 x 700 Ω Load Cells
- Supports 4-wire and 6-wire Load Cell Connections
- Real Time Clock
- Linearity Compensation ON or OFF
- Independent Zero Calibration.
- Auto or User Programmable Odd Weight Calibration
- Calibration and Metrological Control / Access by Hardware or Software
- Non-Resettable Trailer Count to Record Calibration and Metrology Parameters Changes.
- Gravity Compensation via Key Board
- 6 x 1-inch Wide Angle LCD Numeric Digits
- Capacity Tracking Bar to Show Applied & Remaining Weighing Capacity
- Battery Protection Features and Circuits Equipped with RS232, TTL Relay Output, Wireless Communication Interfaces/TTL RS232
- Backlight, Rechargeable Battery, Power Adaptor and Pillar (\varnothing 35~38mm) Mount Holder Included

XSB Series

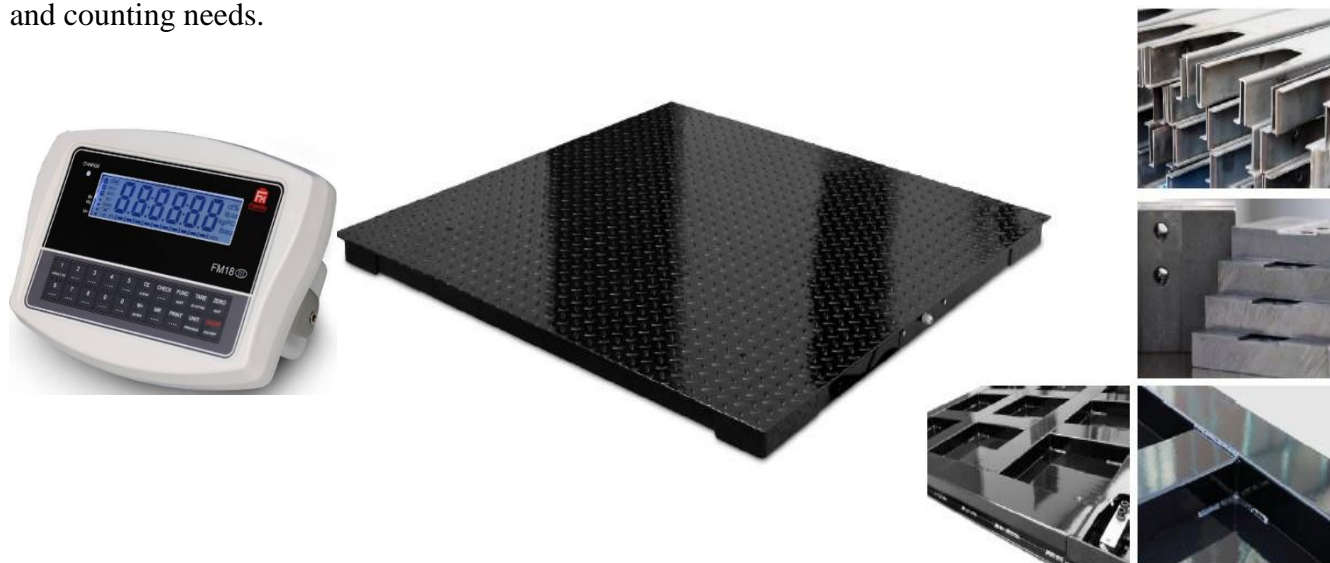
Key Features:

- Extremely Rigid Structural Steel Channel Frame Specifically Designed for Heavy Traffic
- Super Strong Channel Frame Provides Extra Protection by Enclosing the Load Cells, Cable, and Junction Box Inside and away from Chemicals and Other Industrial Elements
- Heavy-Duty Industrial design Threaded Eyebolt Holes for Easy Lifting
- Top-of-Floor or In-Floor Mounting
- Swivel Adjustable Feet Eliminate Weighing Errors due to Misalignment
- Construction Accuracy: - Better than 0.25%



XSB is designed & built to meet a wide range of heavy traffic & high resolution industrial applications up to 6000kg.

It delivers un-exceptional reliability, accuracy and skin smooth performance to meet weighing, batching and counting needs.



Specifications:

Model No	Platform Size (mm)		Load Cell		
XSB-0808 (A, N)	800 x 800		Type: - <ul style="list-style-type: none">A: - OIML / NTEP C3 approvedN: - FM Special Grade Assignment: 4 x 500kg for Max = 1T4 x 1000kg for Max = 2T4 x 1500kg for Max = 3T4 x 2000kg for Max = 5T4 x 3000kg for Max = 6T		
XSB-0810 (A, N)	800 x 1000				
XSB-1010 (A, N)	1000 x 1000				
XSB-1012 (A, N)	1000 x 1200				
XSB-1212 (A, N)	1200 x 1200				
XSB-1215 (A, N)	1200 x 1500				
XSB-1515 A, N)	1500 x 1500				
XSB-1520 (A, N)	1500 x 2000				
XSB-2020 (A, N)	2000 x 2000				
Nominal Capacity (Max)	1T	2T		5T	6T
Adjusted Eccentric Accuracy (kg)	0.05	0.1	0.2	0.5	0.5

Quality, Structural Strength & Accuracy are Safeguarded by:

- Material Grade
- Material Thickness
- Tooling & Method used to handle Material Cutting, Blending ... etc.
- Smart & CNC Made Oversized Heavy Duty Load Cell Supporting & Mounting Blocks
- Strict Construction Accuracy Standards Applied
- Smart & High-Quality Stainless Steel Junction Box used.
- OIML / NTEP C3 Approved or FM Special Grade Load Cell
- High-Density Channel Frame Allocation
- High-Quality Epoxy Coating

Order Code:-

Model No.

- Nominal Capacity - Load Cell Type.
Examples -
- XSB-1010-1T-A for platform size = 1 x 1m; nominal capacity = 500kg; with approved load cells.
- XSB-1215-2T-N for platform size = 1.2 x 1.5m; nominal capacity = 2000kg; with FM Special Grade load cells



Global Asia Trading Company
 Local agent of Fidelity Measurement Co. Ltd.,
 Website : www.gatcobd.com
 E-Mail : info@gatcobd.com
 Contact : +88 01711 531 809